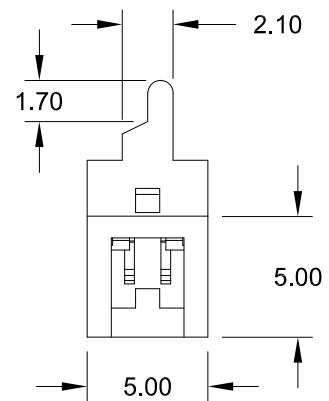
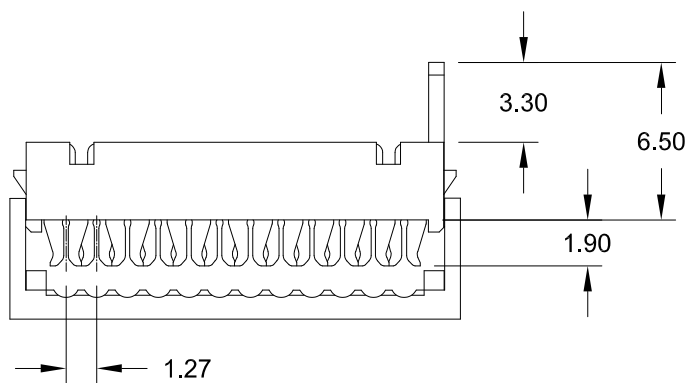
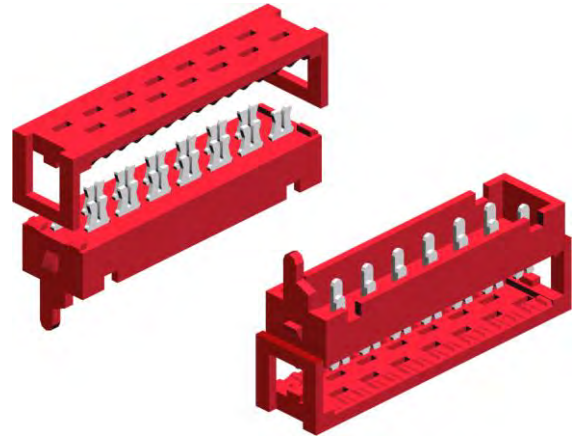
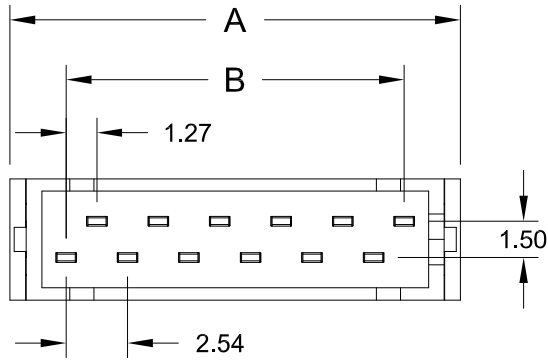


Mini – Flex Connector

IDC pitch 1.27mm shrouded male



Specifications

Current rating	1.5 A max.
Voltage rating	230 V AC/DC
Withstanding voltage	500 V AC
Contact resistance	20 mΩ max.
Insulation resistance	1000 MΩ min.
Operating temperature	- 55°C to +105°C
Insulator material	(RoHS compliant) PBT (red) UL 94 V-0
Contact material	(RoHS compliant) Phosphor Bronze

Ribbon Cable Recommendation

Cable Type	Ribbon UL Style 2651
Spacing	1.27mm
Wire range	stranded 0.08 – 0.09 mm ² AWG 28 solid Ø 0.30 mm
Insulation Diameter	0.90 mm

Dimensions (mm)

Contacts	DIM "A"	DIM "B"	Contacts	DIM "A"	DIM "B"	Contacts	DIM "A"	DIM "B"
004	8.45	3.81	012	18.61	13.97	020	28.77	24.13
006	10.99	6.35	014	21.15	16.51			
008	13.53	8.89	016	23.69	19.05			
010	16.07	11.43	018	26.23	21.59			

How to order

MFM - xxx - DC50 - 99

Nbr of contacts

004; 006; 008; 010
012; 014; 016; 018
020

Plating

99 = Tin
(leadfree)
other platings
on request